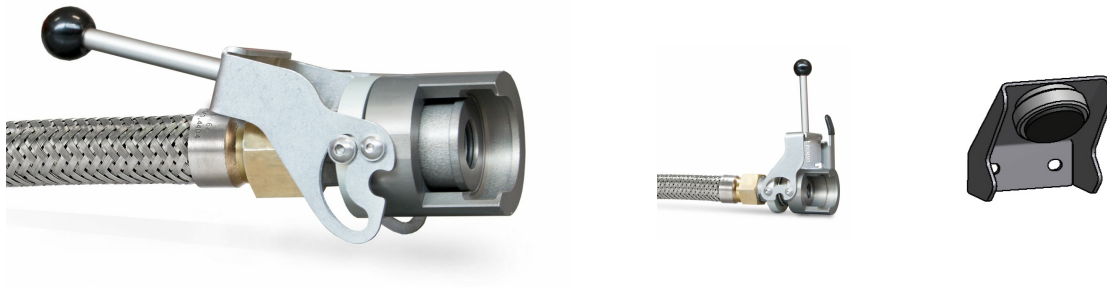


3-1121-R003

## DN20 Quick coupling

### For easy coupling and uncoupling of hoses

The quick coupling is very useful in all fields of application where hoses have to be frequently loosened and reconnected e. g. during final tests of completely mounted GIS fields. Thanks to the clamp lock the DN20 hoses can easily be connected without any loss of SF<sub>6</sub> gas. Thus, the handling times in GIS production are shortened and productivity is increased considerably.



### Advantages & functions

- clamp lock for quick coupling and uncoupling
- suitable for DN20 hoses
- pressure range up to 10 bar
- robust version

### Optional accessories

3-1121-R093	Fixing facility for safe wall assembly and dust protection
-------------	--

### Note

**Important note:** The quick coupling is only compatible with DILLO coupling groove parts of version 2v (additional "V2" stamp on the flange or wrench size).